

## Eclipse Series - NEMA 4, 12

### Single Door Enclosures with Gland Plate

Industrial Enclosures  
Wallmount Enclosures



Single Door with quarter turns



Single Door with 3 point latching handle



Now with  
Gland Plate



#### Application

- Designed to enclose electrical and/or electronic equipment and protect against harsh, industrial environments for wallmount applications
- Impressive styling features like hidden hinges, attractive latching systems make the Eclipse a suitable addition to any high-tech equipment installation.
- For high temperature applications, a gasket retainer may be required, please refer to factory.

#### Standards

- UL 508 Type 12, 4
- CSA Type 12, 4
- **Complies with**
  - NEMA Type 12 and 4
  - IEC 529, IP65

#### Construction

- Formed 14 or 16 gauge steel.
- Smooth, continuously welded seams ground smooth.
- Door stiffeners are provided where required for increased strength and rigidity - designed to also permit additional mounting options.
- Formed lip on enclosure to exclude flowing liquids and contaminants.
- Door latches feature the added safety of quarter turn slot requiring use of tool for opening.
- Doors may be easily removed for modifications and are interchangeable.
- Oil resistant gaskets are permanently secured.
- Collar studs provided for mounting inner panel.
- Includes hardware kit with panel mounting nuts and sealing washers for wall mounting holes.
- Bonding stud provided on door and grounding stud installed in enclosure.
- Quarter turn latches formed from mild steel (diecast key lockable handle with black epoxy finish on 3 point latch).
- Formed steel hinge with stainless steel hinge pins.
- Removable steel gland plate covers cutout in bottom allowing for easy cable entry preparation.

#### Finish

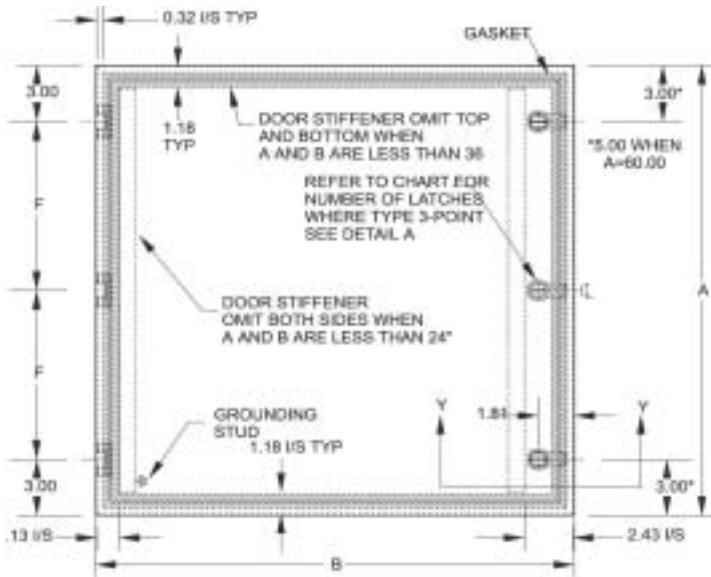
- Cover and enclosure are finished in recoatable textured RAL 7032 beige (CG1) powder coating.

#### Accessories

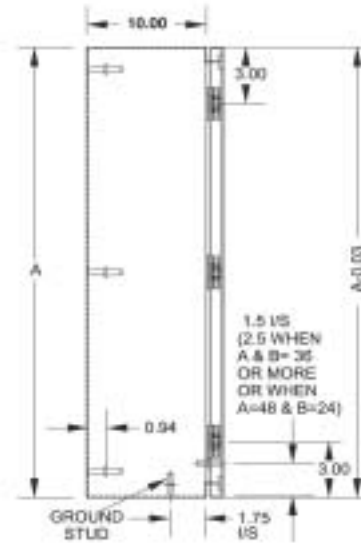
- Air conditioners...see page [348-357](#)
- Blowers...see page [359](#)
- Breather kits...see page [374](#)
- DIN rails...see page [35](#)
- DIN rail mounting kit...see page [35](#)
- Door stop kit...see page [393](#)
- Filter fans...see page [360-367](#)
- Heaters...see page [369-371](#)
- Handles...see page [36](#)
- Inner panel...see page [34](#)
- Quarter turn inserts and keys...see page [36](#)
- Literature pocket...see page [397](#)
- Mounting foot kit...see page [36](#)
- Swing frame...see page [35](#)
- Swing panel...see page [34](#)
- Replacement hinge pins...see page [34](#)
- Replacement quarter turn assemblies...see page [36](#)
- Thermostats...see page [374](#)
- Touch up paint...see page [396](#)
- UL/CSA approved hardware kit...see page [382](#)
- Padlock Adapter (EPA)...see page [382](#)

# Eclipse Series - NEMA 4, 12 Single Door Enclosures with Gland Plate

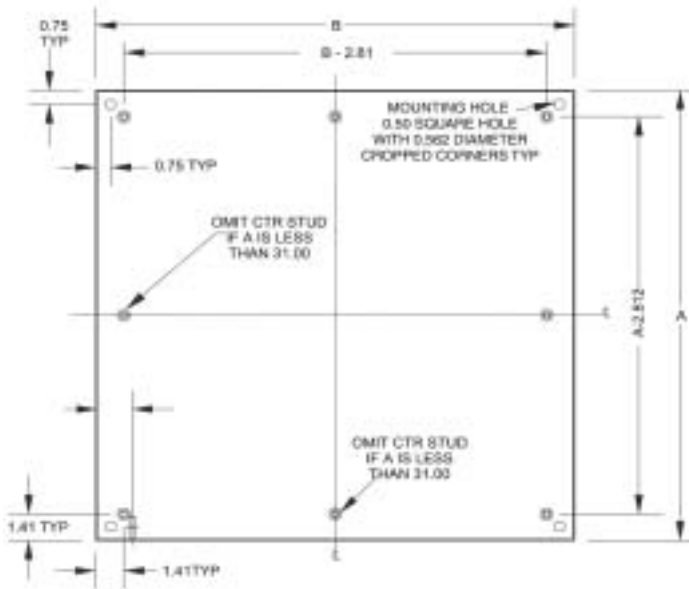
Industrial Enclosures  
Wallmount Enclosures



**Front View**

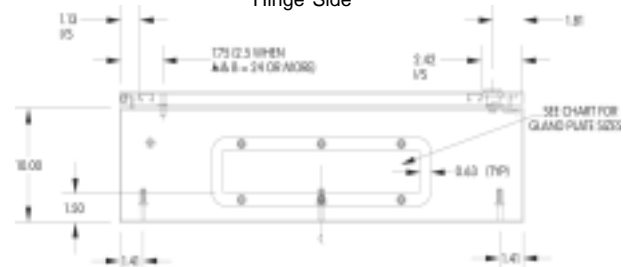


**Side View**  
Hinge Side



**Front Section**

(Door and Body Flange removed)

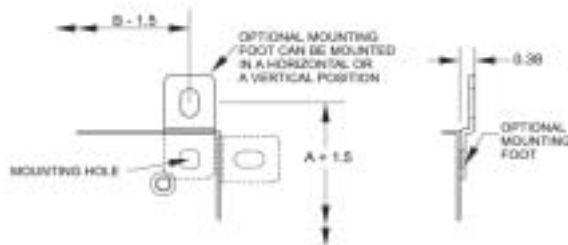


**End View with Gland Plate**



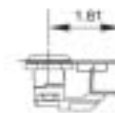
**Cross Section of 14 Gauge Body & Door**

**Cross Section of 16 Gauge Body & Door**

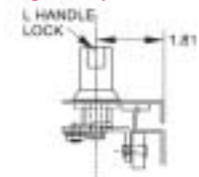


**Mounting Detail**

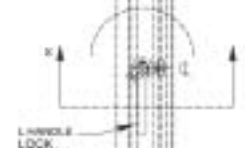
Door & Body Flange Removed



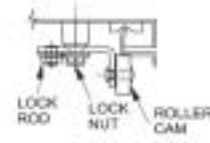
**Quarter Turn Lock Section Y-Y**



**L Handle Lock Section X-X**



**Detail A**



**Cross Section Through End View**

Door Cam Typ 2 pls when L handle is used

Refer to part number and dimension chart on previous page

Technical references and DXF downloads available at [www.hammfg.com](http://www.hammfg.com)

All dimensions in inches unless specified otherwise

## Eclipse Series - NEMA 4, 12

### Single Door Enclosures with Gland Plate

Industrial Enclosures  
 Wallmount Enclosures

Part No.	Overall Dimensions			Door/Body Gauge	Latches		Opt. Panel Part No.	Panel Size		Gland Plate Opening	# Hinges	Ship Wt.	
	A	B	C		Qty	Type		D	E			F	Lbs.
EN4SD12126CG	12	12	6	16	1	Qtr Turn	EP1212	10.2	10.2	5.06 x 1.5	2	6	12
EN4SD16126CG	16	12	6	16	1	Qtr Turn	EP1612	14.2	10.2	5.06 x 1.5	2	10	16
EN4SD16166CG	16	16	6	16	1	Qtr Turn	EP1616	14.2	14.2	11.75 x 2.31	2	10	19
EN4SD16206CG	16	20	6	16	1	Qtr Turn	EP1620	14.2	18.2	11.75 x 2.31	2	10	22
EN4SD20166CG	20	16	6	16	1	Qtr Turn	EP2016	18.2	14.2	11.75 x 2.31	2	14	22
EN4SD20206CG	20	20	6	16	1	Qtr Turn	EP2020	18.2	18.2	11.75 x 2.31	2	14	26
EN4SD24166CG	24	16	6	16	1	Qtr Turn	EP2416	22.2	14.2	11.75 x 2.31	2	18	26
EN4SD24206CG	24	20	6	16	1	Qtr Turn	EP2420	22.2	18.2	11.75 x 2.31	2	18	30
EN4SD24246CG	24	24	6	14	2	Qtr Turn	EP2424	22.2	22.2	11.75 x 2.31	2	18	37
EN4SD16128CG	16	12	8	16	1	Qtr Turn	EP1612	14.2	10.2	5.06 x 1.5	2	10	16
EN4SD16168CG	16	16	8	16	1	Qtr Turn	EP1616	14.2	14.2	12.13 x 4.63	2	10	21
EN4SD16208CG	16	20	8	16	1	Qtr Turn	EP1620	14.2	18.2	12.13 x 4.63	2	10	25
EN4SD20168CG	20	16	8	16	1	Qtr Turn	EP2016	18.2	14.2	12.13 x 4.63	2	14	25
EN4SD20208CG	20	20	8	16	1	Qtr Turn	EP2020	18.2	18.2	12.13 x 4.63	2	14	28
EN4SD20248CG	20	24	8	16	1	Qtr Turn	EP2024	18.2	22.2	19.63 x 4.63	2	14	32
EN4SD24168CG	24	16	8	16	1	Qtr Turn	EP2416	22.2	14.2	12.13 x 4.63	2	18	26
EN4SD24208CG	24	20	8	16	1	Qtr Turn	EP2420	22.2	18.2	12.13 x 4.63	2	18	32
EN4SD24248CG	24	24	8	14	2	Qtr Turn	EP2424	22.2	22.2	19.63 x 4.63	2	18	40
EN4SD24308CG	24	30	8	14	2	Qtr Turn	EP2430	22.2	28.2	19.63 x 4.63	2	18	48
EN4SD30208CG	30	20	8	14	2	Qtr Turn	EP3020	28.2	18.2	12.63 x 4.63	3	12	42
EN4SD30248CG	30	24	8	14	2	Qtr Turn	EP3024	28.2	22.2	19.63 x 4.63	3	12	46
EN4SD30308CG	30	30	8	14	2	Qtr Turn	EP3030	28.2	28.2	19.63 x 4.63	3	12	67
EN4SD36248CG	36	24	8	14	2	Qtr Turn	EP3624	34.2	22.2	19.63 x 4.63	3	15	55
EN4SD36308CG	36	30	8	14	2	Qtr Turn	EP3630	34.2	28.2	19.63 x 4.63	3	15	77
EN4SD36368CG	36	36	8	14	2	Qtr Turn	EP3636	34.2	34.2	19.63 x 4.63	3	15	94
EN4SD161210CG	16	12	10	16	1	Qtr Turn	EP1612	14.2	10.2	5.06 x 1.5	2	10	18
EN4SD161610CG	16	16	10	16	1	Qtr Turn	EP1616	14.2	14.2	11.75 x 2.31	2	10	23
EN4SD162010CG	16	20	10	16	1	Qtr Turn	EP1620	14.2	18.2	12.13 x 4.63	2	10	28
EN4SD201610CG	20	16	10	16	1	Qtr Turn	EP2016	18.2	14.2	11.75 x 2.31	2	14	28
EN4SD202010CG	20	20	10	16	1	Qtr Turn	EP2020	18.2	18.2	12.13 x 4.63	2	14	31
EN4SD202410CG	20	24	10	16	1	Qtr Turn	EP2024	18.2	22.2	19.63 x 4.63	2	14	36
EN4SD241610CG	24	16	10	16	1	Qtr Turn	EP2416	22.2	14.2	11.75 x 2.31	2	18	30
EN4SD242010CG	24	20	10	16	1	Qtr Turn	EP2420	22.2	18.2	12.13 x 4.63	2	18	36
EN4SD242410CG	24	24	10	14	2	Qtr Turn	EP2424	22.2	22.2	19.63 x 4.63	2	18	45
EN4SD243010CG	24	30	10	14	2	Qtr Turn	EP2430	22.2	28.2	19.63 x 4.63	2	18	53
EN4SD302010CG	30	20	10	14	2	Qtr Turn	EP3020	28.2	18.2	12.13 x 4.63	3	12	47
EN4SD302410CG	30	24	10	14	2	Qtr Turn	EP3024	28.2	22.2	19.63 x 4.63	3	12	53
EN4SD303010CG	30	30	10	14	2	Qtr Turn	EP3030	28.2	28.2	19.63 x 4.63	3	12	75
EN4SD362410CG	36	24	10	14	2	Qtr Turn	EP3624	34.2	22.2	19.63 x 4.63	3	15	70
EN4SD363010CG	36	30	10	14	2	Qtr Turn	EP3630	34.2	28.2	19.63 x 4.63	3	15	84
EN4SD363610CG	36	36	10	14	2	Qtr Turn	EP3636	34.2	34.2	19.63 x 4.63	3	15	100
EN4SD423610CG	42	36	10	14	1	3-point	EP4236	40.2	34.2	19.63 x 4.63	4	12	117
EN4SD482410CG	48	24	10	14	1	3-point	EP4824	46.2	22.2	19.63 x 4.63	4	14	95
EN4SD483610CG	48	36	10	14	1	3-point	EP4836	46.2	34.2	19.63 x 4.63	4	14	125
EN4SD603610CG	60	36	10	14	1	3-point	EP6036	58.2	34.2	19.63 x 4.63	4	18	150
EN4SD202012CG	20	20	12	16	1	Qtr Turn	EP2020	18.2	18.2	12.13 x 4.63	2	14	34
EN4SD242012CG	24	20	12	16	1	Qtr Turn	EP2420	22.2	18.2	12.13 x 4.63	2	18	38
EN4SD242412CG	24	24	12	14	2	Qtr Turn	EP2424	22.2	22.2	19.63 x 4.63	2	18	47
EN4SD302412CG	30	24	12	14	2	Qtr Turn	EP3024	28.2	22.2	19.63 x 4.63	3	12	57
EN4SD303012CG	30	30	12	14	2	Qtr Turn	EP3030	28.2	28.2	19.63 x 4.63	3	12	80
EN4SD362412CG	36	24	12	14	2	Qtr Turn	EP3624	34.2	22.2	19.63 x 4.63	3	15	62
EN4SD363012CG	36	30	12	14	2	Qtr Turn	EP3630	34.2	28.2	19.63 x 4.63	3	15	91

Technical references and DXF downloads available at [www.hamcfg.com](http://www.hamcfg.com)

All dimensions in inches unless specified otherwise

# Eclipse Series - NEMA 4, 12

## Single Door Enclosures with Gland Plate

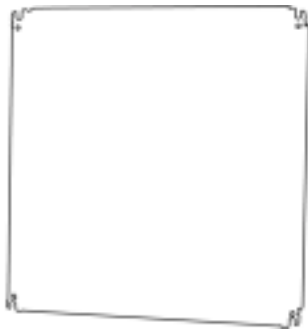
Continued from previous page.

Part No.	Overall Dimensions			Door/Body Gauge	Latches		Opt. Panel Part No.	Panel Size		GlandPlate Opening	# Hinges	Ship Wt. Lbs.	
	A	B	C		Qty	Type		D	E				
EN4SD363612CG	36	36	12	14	2	Qtr Turn	EP3636	34.2	34.2	19.63 x 4.63	3	15	104
EN4SD423612CG	42	36	12	14	1	3-point	EP4236	40.2	34.2	19.63 x 4.63	4	12	121
EN4SD482412CG	48	24	12	14	1	3-point	EP4824	46.2	22.2	19.63 x 4.63	4	14	98
EN4SD483612CG	48	36	12	14	1	3-point	EP4836	46.2	34.2	19.63 x 4.63	4	14	148
EN4SD603612CG	60	36	12	14	1	3-point	EP6036	58.2	34.2	19.63 x 4.63	4	18	165
EN4SD242416CG	24	24	16	14	2	Qtr Turn	EP2424	22.2	22.2	19.63 x 4.63	2	18	66
EN4SD363016CG	36	30	16	14	2	Qtr Turn	EP3630	34.2	28.2	19.63 x 4.63	3	15	102
EN4SD483616CG	48	36	16	14	1	3-point	EP4836	46.2	34.2	19.63 x 4.63	4	14	148
EN4SD242420CG	24	24	20	14	2	Qtr Turn	EP2424	22.2	22.2	19.63 x 4.63	2	18	70
EN4SD302420CG	30	24	20	14	2	Qtr Turn	EP3024	28.2	22.2	19.63 x 4.63	3	12	82
EN4SD363020CG	36	30	20	14	2	Qtr Turn	EP3630	34.2	28.2	19.63 x 4.63	3	15	117

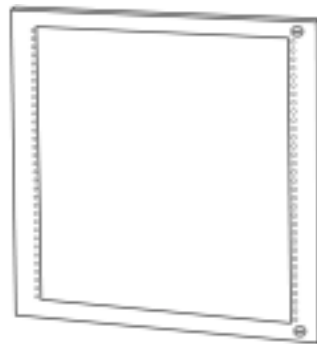
Refer to drawing on following page  
 \* Does not meet Nema 4 requirements

Industrial Enclosures  
Wallmount Enclosures

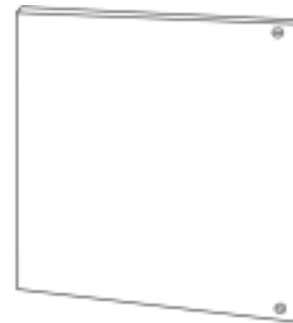
### Optional Accessories



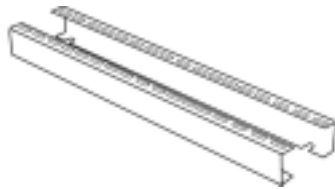
Inner panel...see page 34



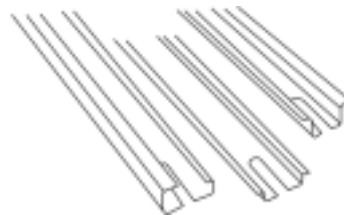
Swing frame...see page 35



Swing panel...see page 34



DIN rail mounting kit...see page 35



DIN rails...see page 35



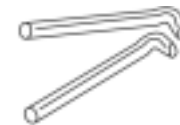
Handles...see page 36



Quarter turn inserts and keys...see page 36



Mounting foot kit...see page 36



Replacement hinge pins...see page 34

Technical references and DXF downloads available at [www.hammfg.com](http://www.hammfg.com)

All dimensions in inches unless specified otherwise

Quality Enclosures. Service Excellence.